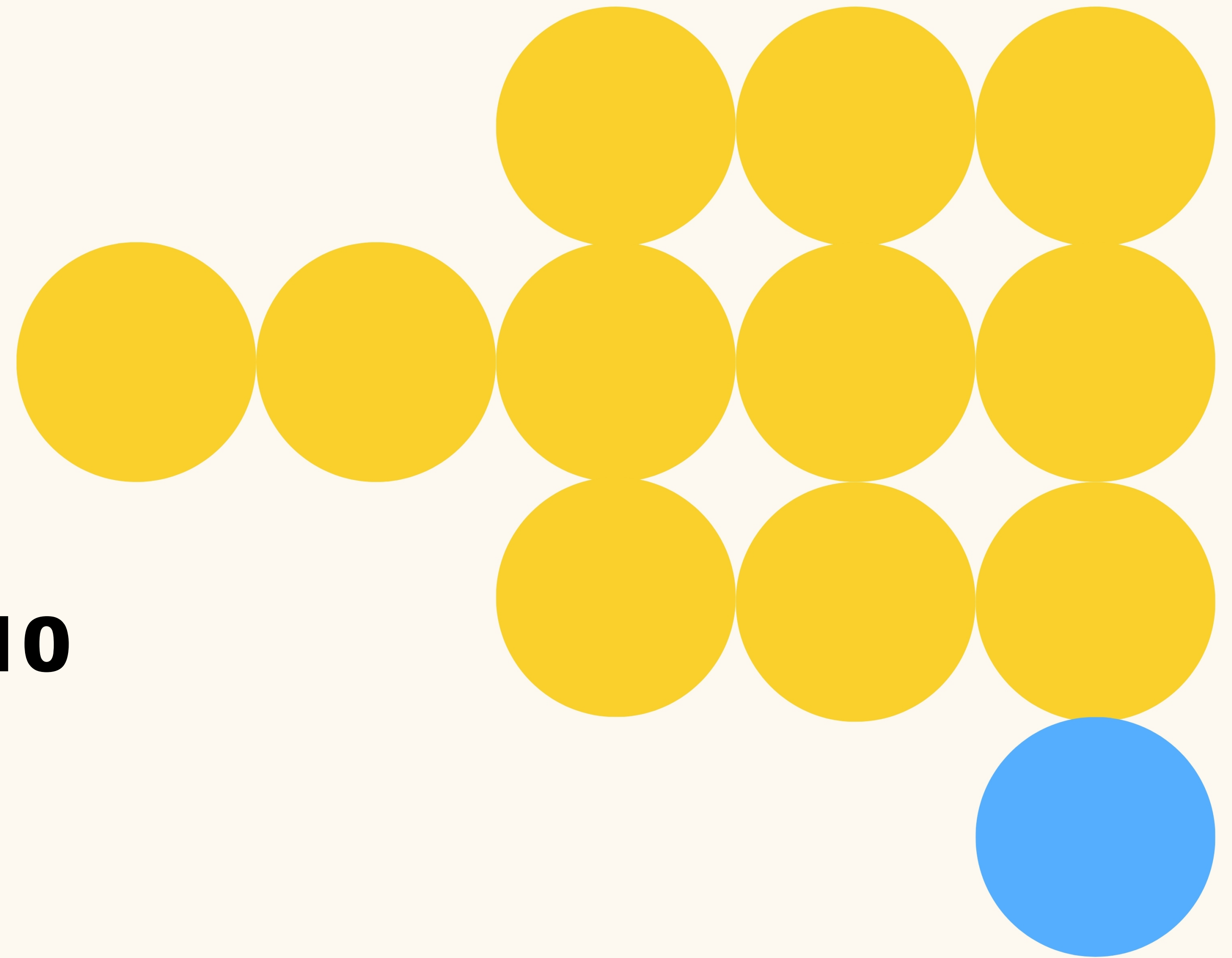


# Supply

## Microeconomics - year10



# Agenda

Drive growth of monthly sales volume of purchases

- Multiple choice
- Essay

Be the most desirable brand



# Recap

---

**IGCSE Economics Exam Crash Course by Knockout.Economics**

**Chapter8 : Supply**

# Part1-Multiple choice

1. The table shows the supply for a product at different prices.

If the price changes from \$ 16 to \$18, What will be the change in supply?

A Supply will contract by 400 units and there will be a movement down along the supply curve.

B Supply will contract by 200 units and there will be an inward shift of the supply curve.

C Supply will extend by 400 units and there will be a movement up along the supply curve.

D Supply will extend by 200 units and there will be an outward shift of the supply curve.

Price (\$)	Supply (Units)
10	1200
12	1600
14	2000
16	2400
18	2800

# Part1-Multiple choice

## 2. What does a supply curve show?

- A. A firm will supply more when consumers have greater purchasing power.
- B. As production costs rise, the higher the price, the fewer goods are supplied.
- C. The lower the price, higher profit is made by the firm
- D. There is a positive relationship between quantity supplied and price.

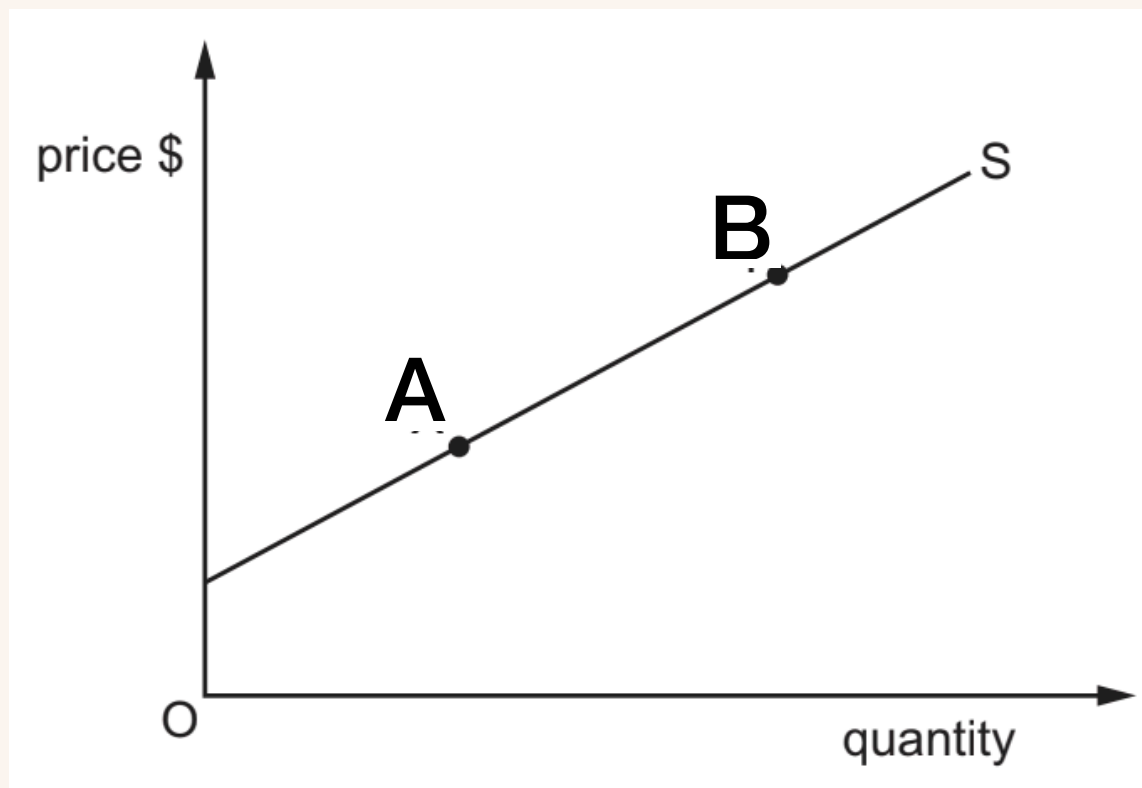
# Part1-Multiple choice

3. In the USA, the price of timber used in house building increases. This was because of a boom in the USA house building industry and higher cost of transportation of delivery the timber. What happened in the USA market for timber to cause this price increase?

	Demand curve	Supply curve
A	shifted right	shifted right
B	shifted right	shifted left
C	shifted left	shifted right
D	shifted left	shifted left

# Part1-Multiple choice

4. The diagram shows the supply curve of a good. What is the name and cause of the movement from A to B.



- A. A contraction of supply caused by an inward shift in demand
- B. A contraction of supply caused by an outward shift in demand
- C. An extension of supply caused by an inward shift in demand
- D. An extension of supply caused by an outward shift in demand

# Part1-Multiple choice

**5. What can cause the supply curve for a product shift to the left?**

- A. An increase in government subsidies to producers
- B. A decrease in indirect tax on the product
- C. An increase in the costs of production
- D. Firms apply advanced technology in the production process

# Part2-Essay

1. Analyse why supply of computer increases? [6]
2. Discuss supply of electric cars will increase in the future? [8]

# Part2-Essay (continue)

2. Discuss supply of electric cars will increase in the future? [8]

# The End

